

# NORDIC ULTRA 12 000



FRACTIONAL  
MODE

PULSE MODE

V MODE

CO<sub>2</sub>  
FRACTIONAL LASER



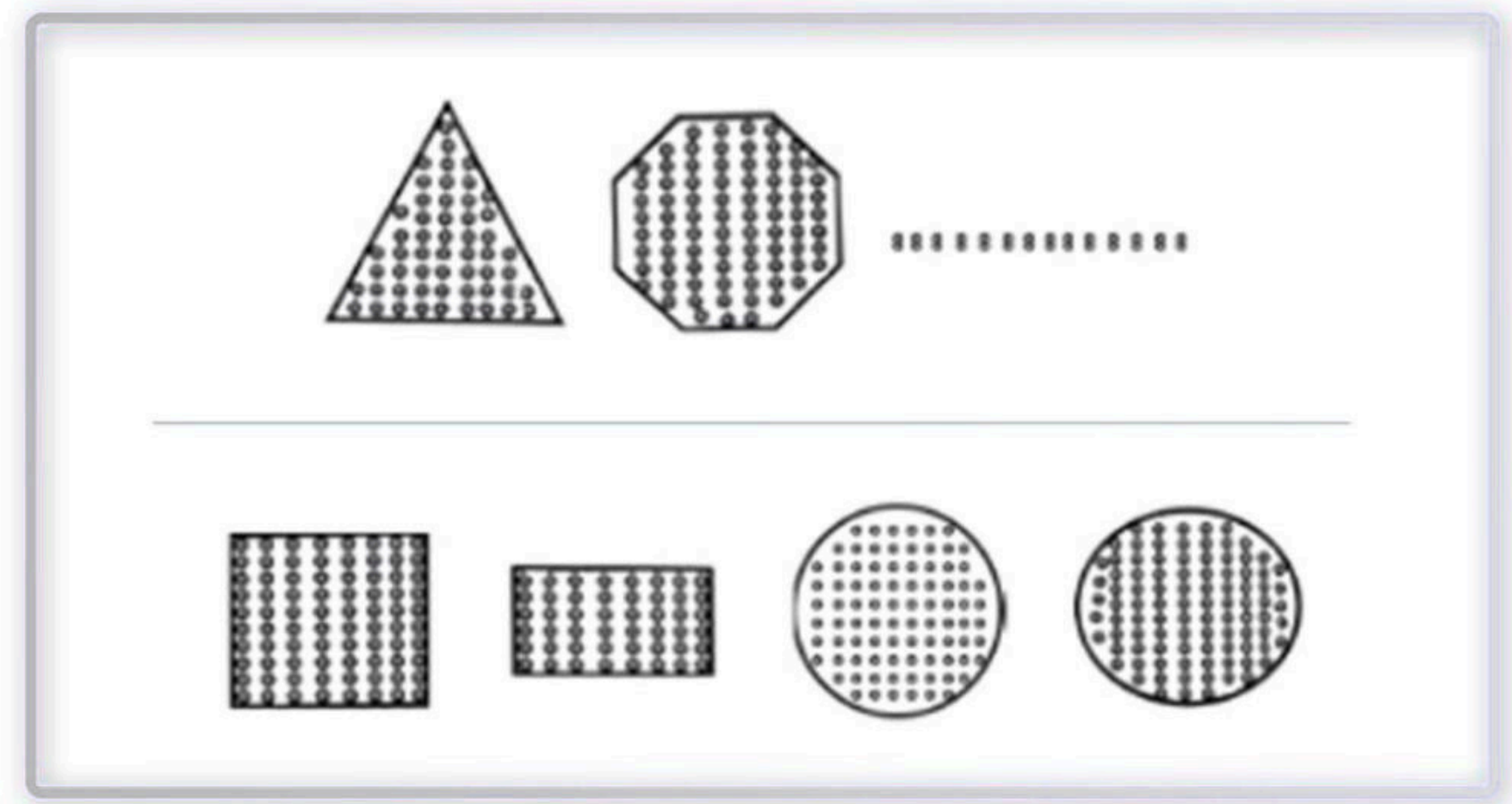
## Fractional **CO2** laser probes for skin resurfacing

Korea imported high performance handpieces



### Treatment graphic

Suitable for many  
Different areas  
Of treatment







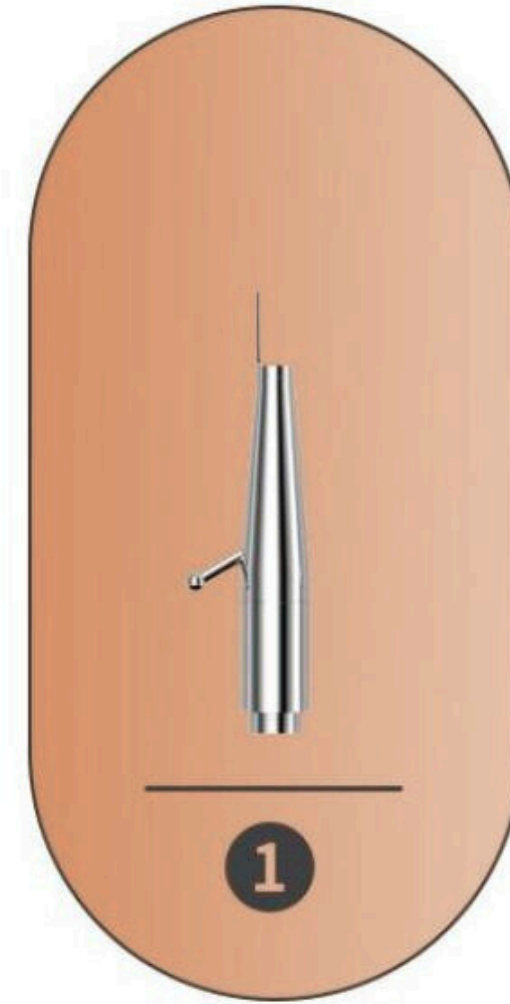
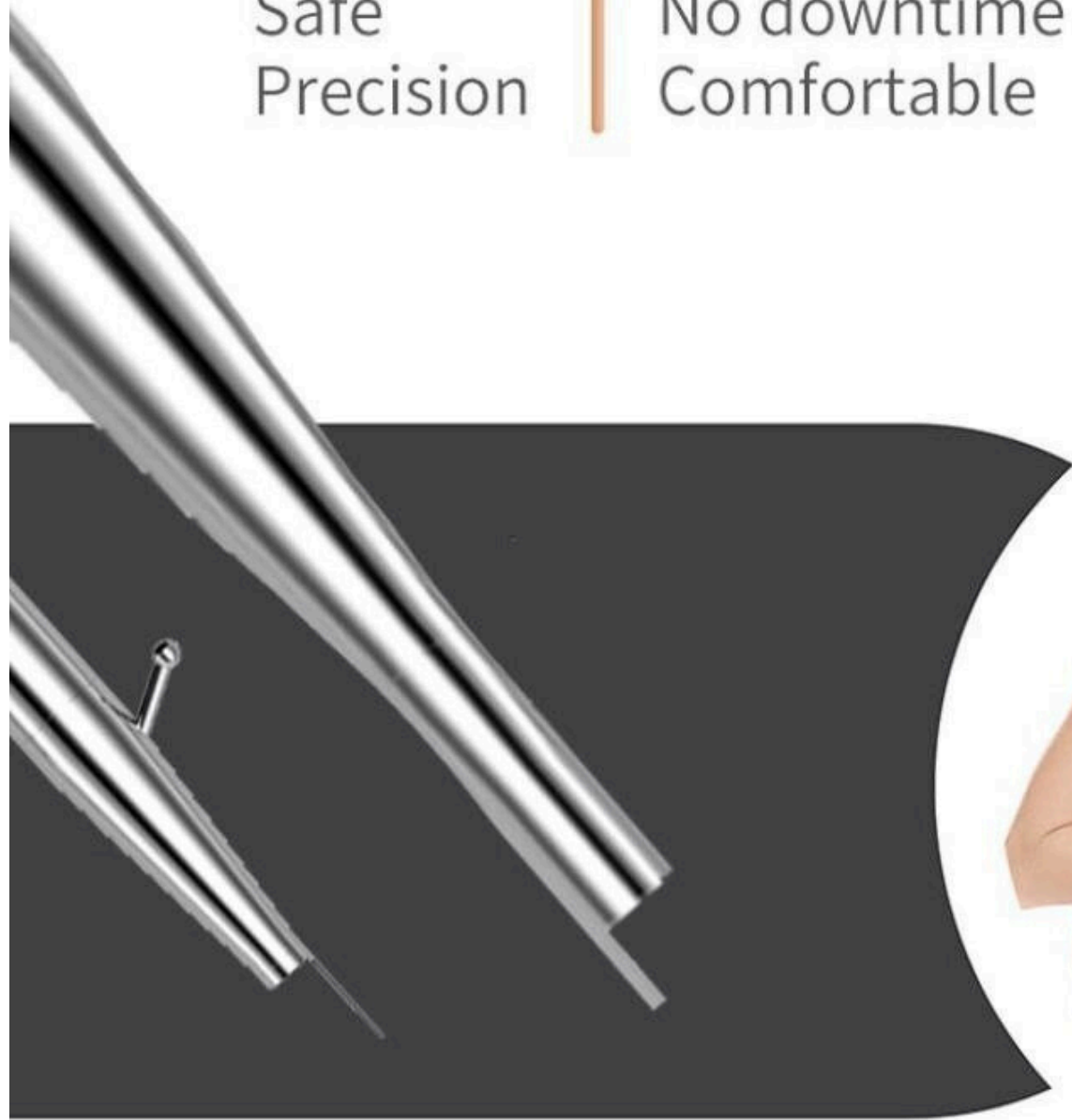
Advanced **CO2** laser probe

for tag removal

No damage to skin

Safe  
Precision

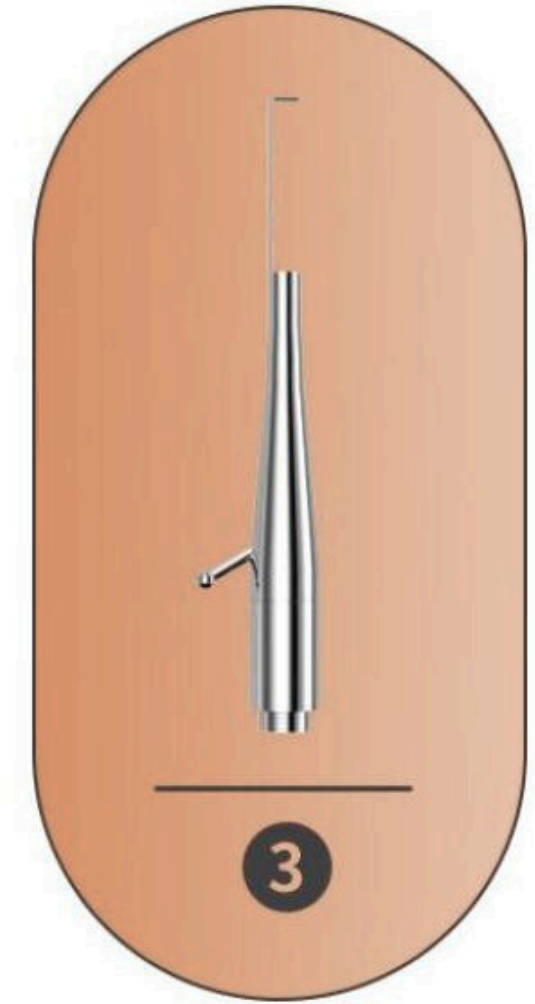
No downtime  
Comfortable



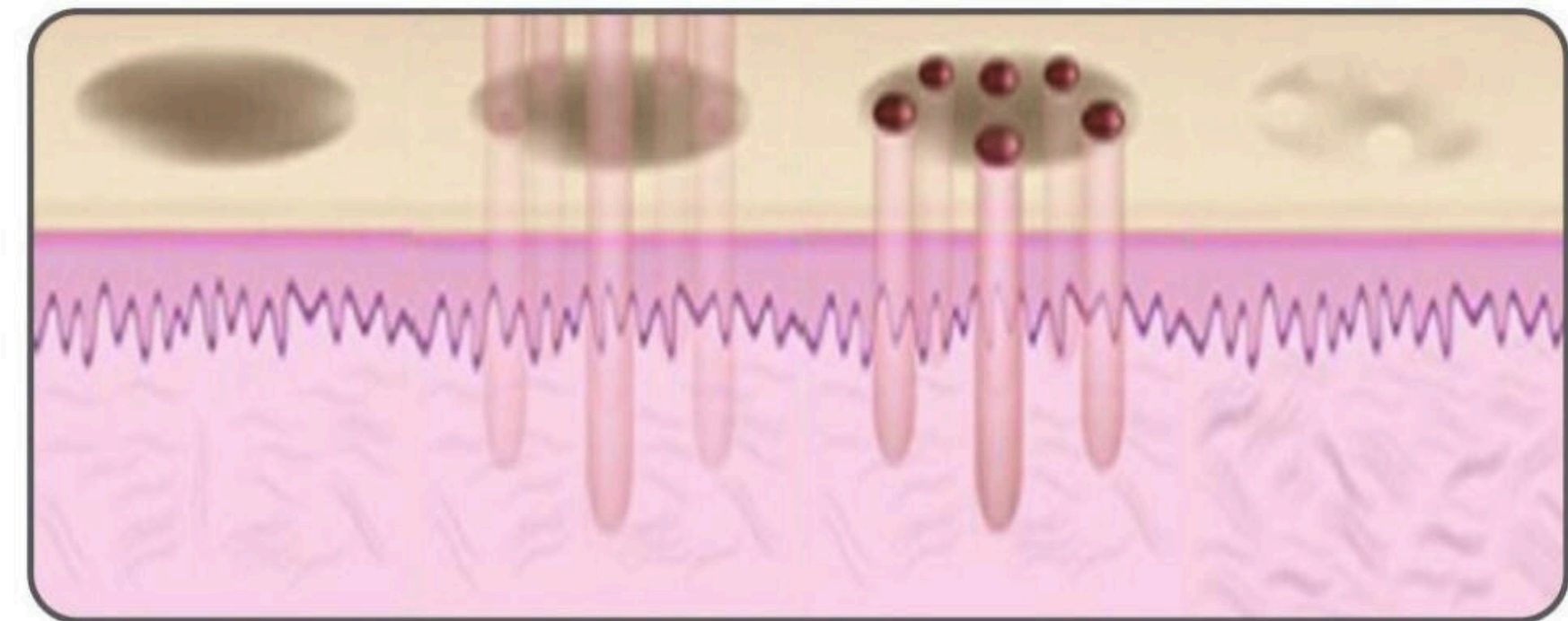
1



2



3

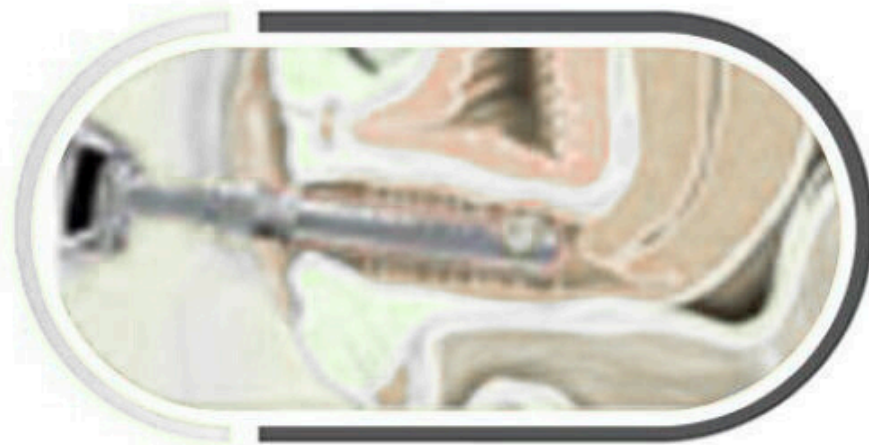


EFFECTIVELY ELIMINATING THE SKIN TAG CASING



## Probes for vaginal rejuvenating treatment

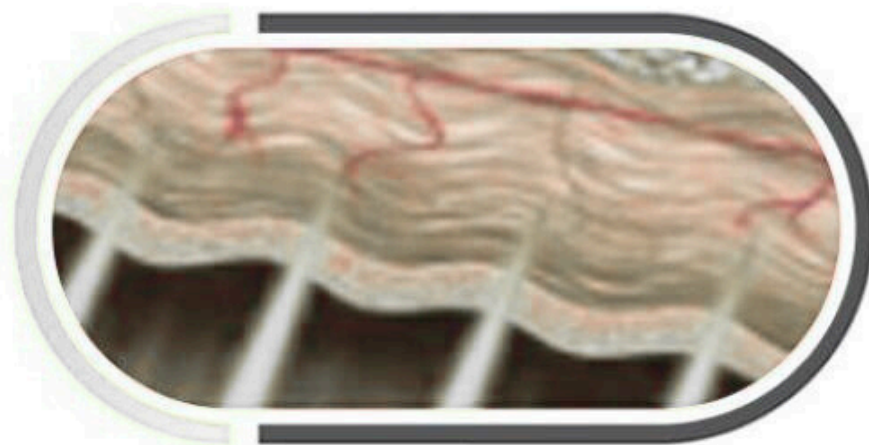
- 1 Vulval rejuvenation probe
- 2 Pink labia treatment probe
- 3 Vaginal rejuvenation probe



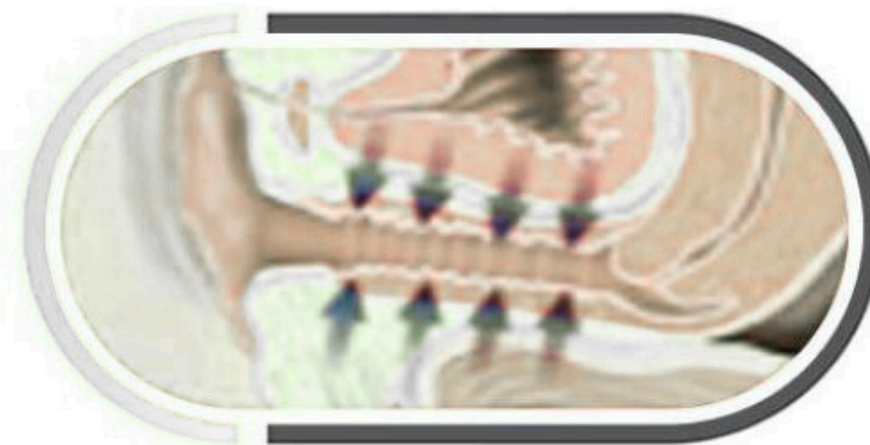
Laser irradiation angle can be adjusted



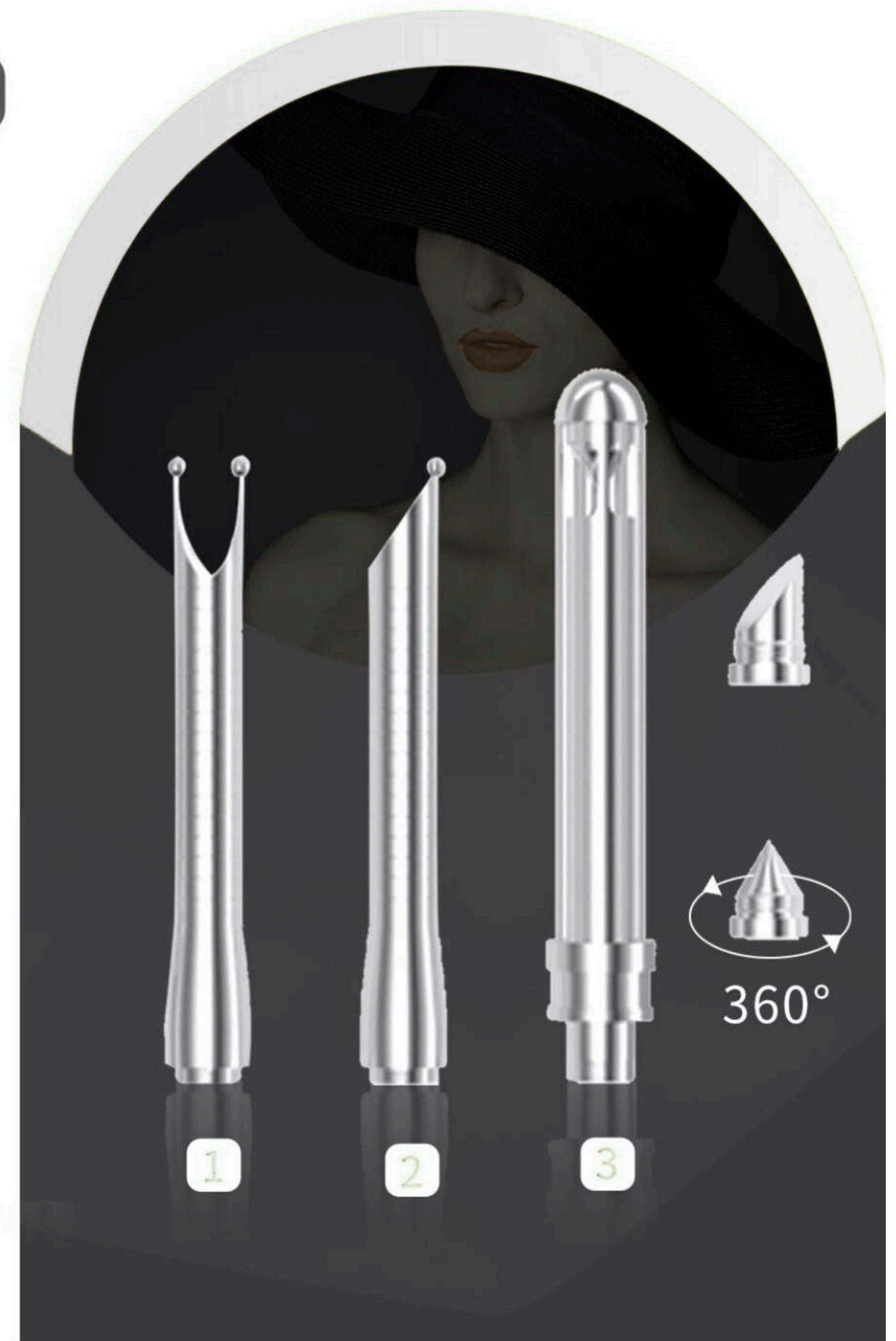
Laser irradiation can be rotated 360 degrees



The area of the laser is compact edge contraction



Vaginal walls shrink and tightening





## Applications:

### Fractional Mode

- Skin Tags & Benign Skin Lesion
- Skin Rejuvenation & Skin Tightening
- Scar Remodeling
- Skin Imperfections & Skin Resurfacing



Skin Rejuvenation  
& Tightening



Private Maintenance



Scar Recovery



Post-partum Recovery



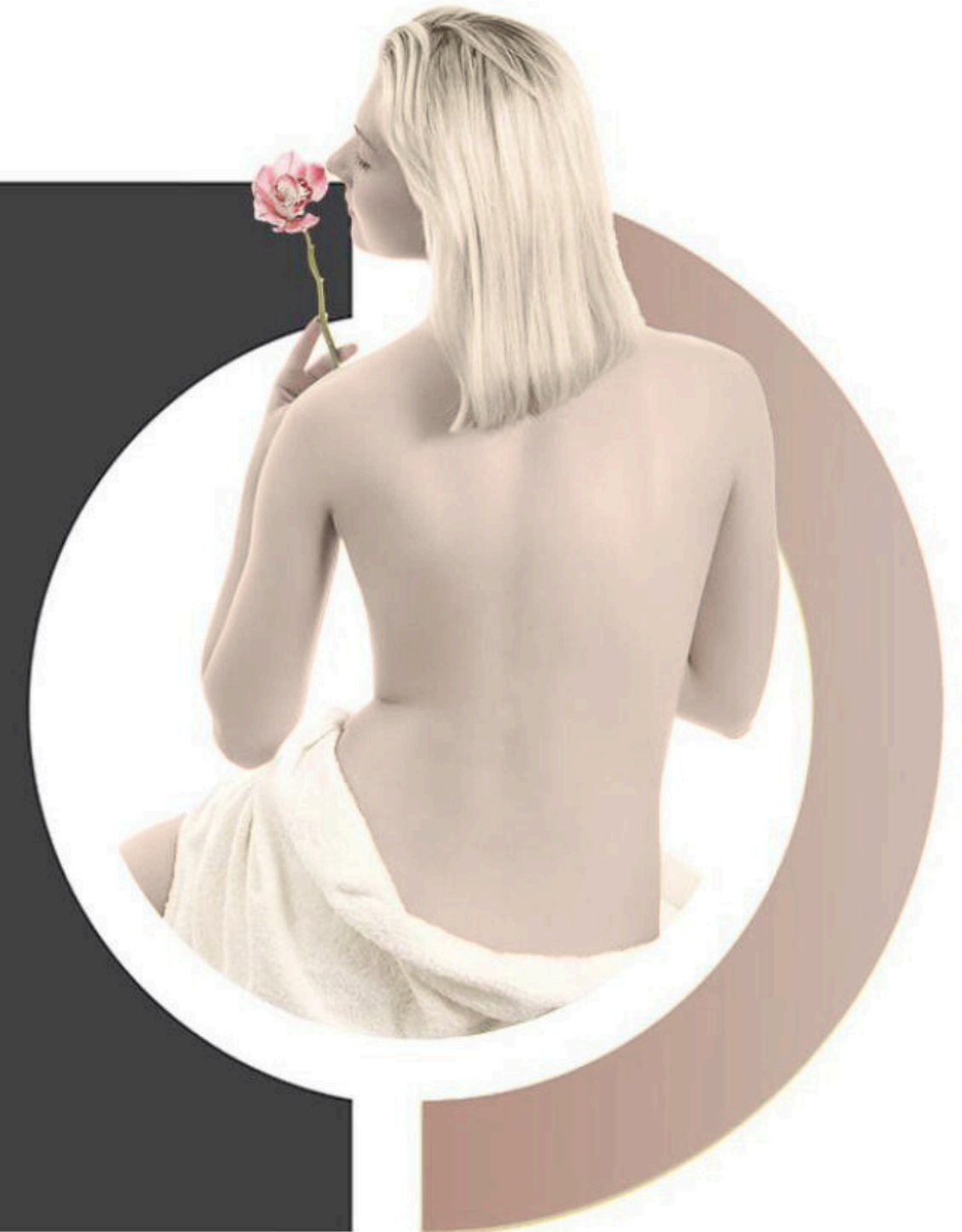
Spots & Acne Removal

### Vaginal Mode

- Vaginal rejuvenation.
- Vaginal tightening.
- Improve vaginal lubrication and sensitivity.

### Pulse Mode

- Remove sarcoma
- Remove nevo

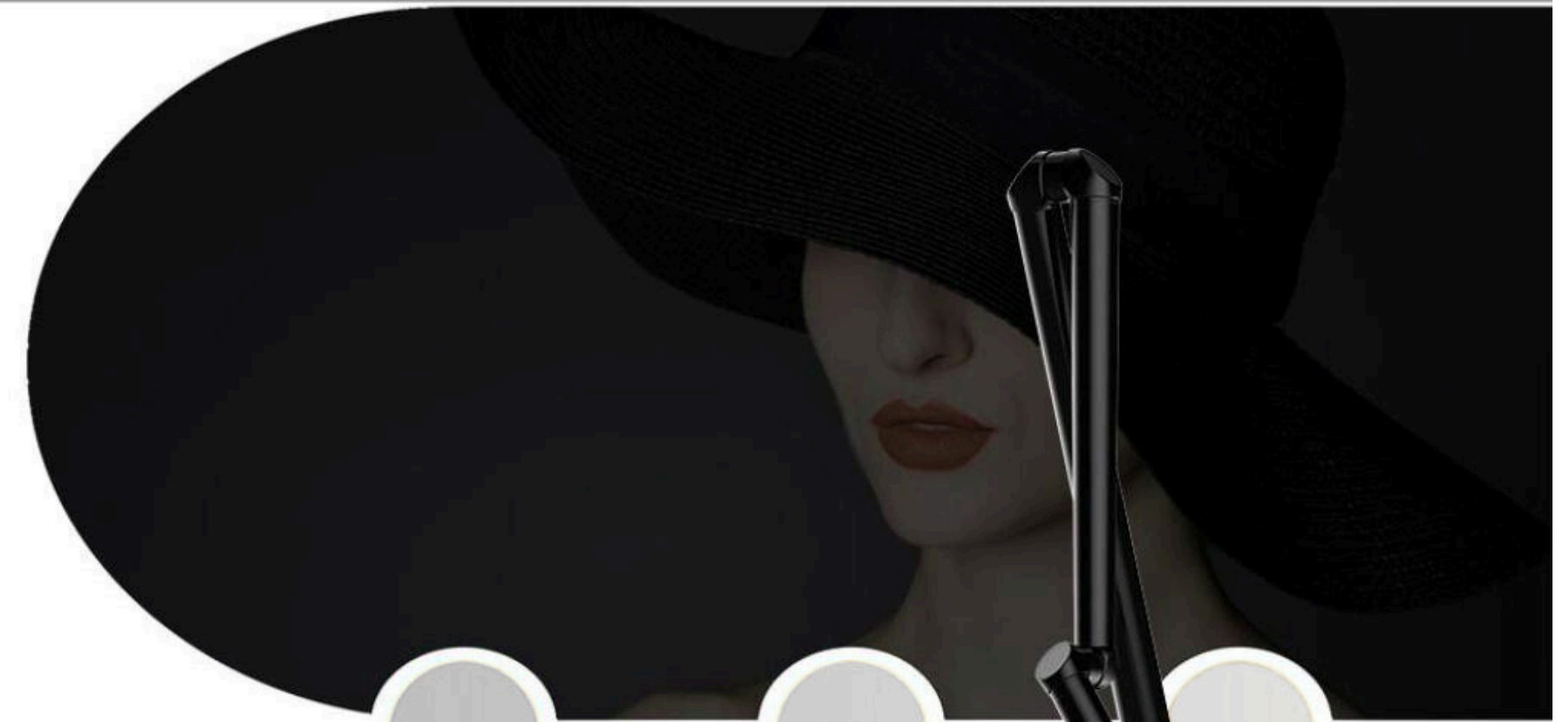






## Unique Features:

- Fractional mode (aesthetic) & Pulse mode (surgery) & Gynae mode (gynecology), 3 modes can meet all needs of beautician, plastic surgeon, and gynecologist
- The best quality RF laser tube, the famous "USA-Synrad" brand, it is not necessary to change it frequently in the future
- 7-joint articulated arms imported from South Korea with high-quality lenses and best transmission efficiency.
- Mini-Stepping-Motors imported from Germany used in the arm, makes the laser shoot faster, the energy much more uniform and stable.
- High-quality constant current and constant voltage power supply ensures stable and continuous energy for the machine
- Uniquely designed scan heads, easy to operate







## Technology parameters

Wavelength	10600nm
Power	l ~ 60W
Scan range	MAX 20mm * 20mm
Spot diameter	100um ~ 2000um
Scan mode	Order, Center or Random
Treatment mode	Fractional mode, Pulse mode, Gynae mode
Output graphics	Circle, ellipse, triangle, rectangle, square, hexagon, straight line
Delivery beam	7-joint articulated arm with rotation up to 360°
Screen	10.4" touch LCD display
Voltage	220/110 V, 50/60 HZ

